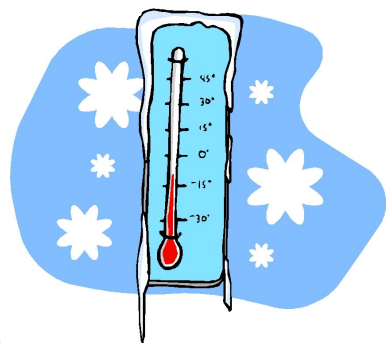


## Geography

In Geography we will be looking at seasonal weather patterns around the world.



## Music

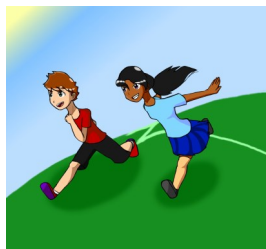
We will

be following Unit 5 of the Music Express Course and listening and making different sounds.



## PE

Indoor PE will focus on Dance.

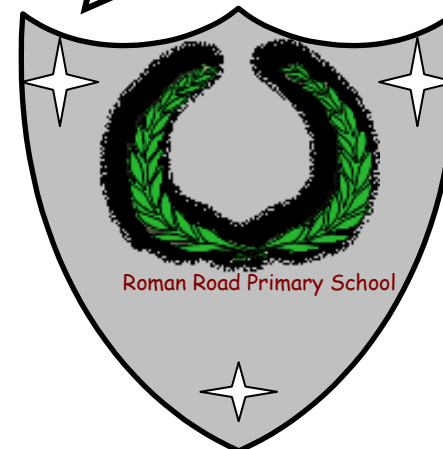


Outdoor PE will focus on Athletics.

**If you would like further information about the curriculum or are interested in attending any courses to improve your own skills in order to help your child please see MRS WOOD**

**More detailed information can be found at:  
<https://www.gov.uk/government/publications/national-curriculum-in-england-primary-curriculum>**

**Roman Road Primary School**



**In Pursuit of Excellence**

**Year 1  
Curriculum  
Summer 5**

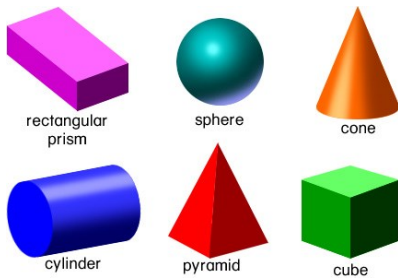
# English

We will be writing a recount of a school day and reading stories from other cultures, identifying the settings and characters.



# Mathematics

Count back and forth from 0 to 100 from any given number. Read and write numbers to 100. Number bonds and subtraction facts to 20. Recognise and name 2D and 3D shapes begin looking at nets of shapes. Double and half numbers to 100.



Useful website: [www.mymaths.co.uk](http://www.mymaths.co.uk)  
Login: romanroad  
Password: smart

## Science

The Science for this term is observing and collecting data about the different types of weather.



## RE and PSICHE

The RE for this term will focus on Belonging to Sikhism and Hinduism.



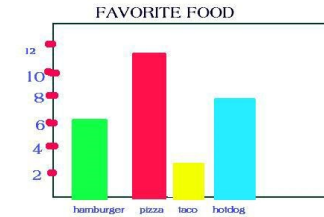
The PSICHE for this term is relationships and how we get on with our family and friends.



WE will also be looking at differences as we are growing up and changing.

## ICT

In ICT we will be collecting data to make and interpret graphs.



## DT

In DT we will be looking at structures and making models of an adventure playground.



Roman Road Primary School  
Roman Road  
East Ham  
London E6 3SQ

Phone: 0207 476 1602

E-mail: [info@romanroad.newham.sch.uk](mailto:info@romanroad.newham.sch.uk)